



DAMTEC[®]
AUSTRALASIA PTY LTD



acoustic underlay
made from recycled rubber

**PROVIDING YOU
PEACE AND QUIET**

K KRAIBURG
RELASTEC

Gummiwerk KRAIBURG RELASTEC GmbH is a medium-sized company with production works in Salzwedel, a historic Hanseatic city in the Altmark region of Saxony-Anhalt/Germany.

We are a member of the KRAIBURG Group, an organization rich in tradition with over 1700 employees worldwide and an annual sales volume of approx. € 300 million. We are an internationally recognized manufacturer of ready-to-install products for impact sound reduction (DAMTEC®), impact protection (EUROFLEX®), structural protection (KRAITEC®) and sports floors (SPORTEC®) and are acknowledged as a market leader in these sectors.

Refined continuously by further development, our field-proven products and expertise benefit a wide range of customers including system providers, floor covering distributors, building supply retailers, playground equippers, municipalities, playground equipment manufacturers, planning engineers and architects.

Our products are manufactured by proprietary environment-friendly processes utilizing up to 90 % recycled raw materials.

***DAMTEC*®**

FEATURES AND BENEFITS



- Outstanding impact sound deadening in residential and commercial floors
- Eliminates hollow clicking sounds and reverberations (floor to ceiling noise) under hard flooring
- Can be loose laid (always lays flat and will not slip during installation)
- May be used for glue-down applications (glued to the subfloor and/or to the flooring above)
- Cushioning effect increases underfoot comfort in combination with carpeting
- Meets and exceeds tough acoustic building requirements while only slightly adding to overall floor height
- Excellent thermal conductivity, ideal for use with underfloor heating/cooling systems
- Can be used over a wide service temperature range
- Outstanding compressive strength and load-bearing performance
- Highest resiliency even after years of use (does not compress and reduce sound absorption)
- Superior resistance to moisture absorption and rot degradation
- Environment-friendly (made from recycled rubber, can be recycled again)

DAMTEC[®] PRODUCTS

DIRECTLY UNDER FLOOR COVERING

DAMTEC[®] standard

DAMTEC[®] standard is the universal product in the DAMTEC[®] product family. This underlay can be used under all types of tile, timber, carpet, linoleum and PVC flooring which reduces unwanted noise - within your own four walls and those of your neighbours as well. DAMTEC[®] standard ensures a pleasant work or residential environment and is well suited for use in a wide range of applications.

DAMTEC[®] color

DAMTEC[®] color is manufactured from natural, raw materials, high grade medical rubber and cork - making it an excellent insulating underlay for floors in residential and commercial buildings. This unique underlay, is ideal under all types of timber floors (Including direct-stick of parquetry block applications), carpet and PVC flooring since its plasticizer-free formulation eliminates the need for a separating layer to prevent unsightly migration. DAMTEC[®] color makes your home or office a nice place to be.

DAMTEC[®] pur

DAMTEC[®] pur is an excellent insulating underlay for floors in residential and other buildings. This underlay is specifically designed to be installed below vinyl and PVC flooring since its plasticizer-free formulation eliminates the need for a separating layer to prevent unsightly migration and softener discoloration in floor finishes.

UNDER SCREED / ON WOODEN SUBFLOORS

DAMTEC[®] estra

DAMTEC[®] estra is the ideal rubber underlay in floating screed/concrete slab systems or underneath rigid floor elements on wooden subfloors, providing extremely high resistance to compressive loads and outstanding elasticity. It is equally well suited for applications in residential, office and commercial buildings. DAMTEC[®] estra is particularly quick and easy to install. It provides a wide range of benefits under screed or rigid floor elements including long service life and superb strength.

DAMTEC[®] system

DAMTEC[®] system is the premium insulating padding for concrete or wooden subfloors. It provides outstanding impact sound deadening properties under screed or rigid floor elements.

DAMTEC[®] system's special design and granular-textured surface ensure superior acoustic insulation especially in the low frequency range, the most difficult part of impact sound insulation. DAMTEC[®] system is ideal for use on wooden subfloors in combination with flooring of various types, generating high market demand particularly in the refurbishment sector.



DAMTEC® DIRECTLY UNDER FLOOR COVERING

1 DAMTEC® standard



all timber floors

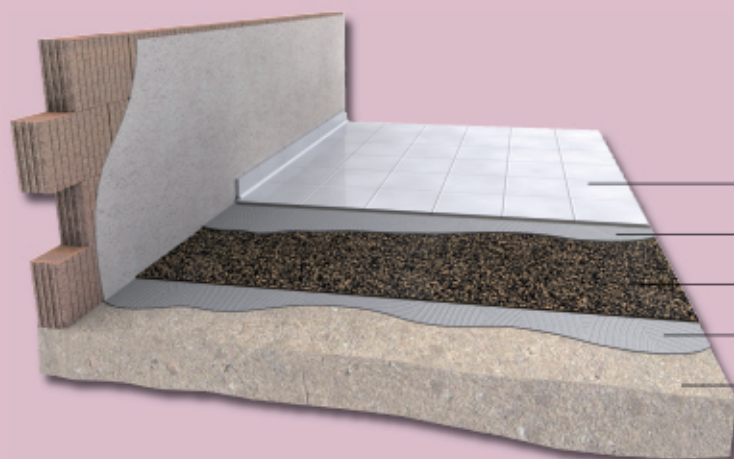
adhesive

DAMTEC® standard

adhesive

subfloor (e.g. concrete)

2 DAMTEC® standard



all types of tile

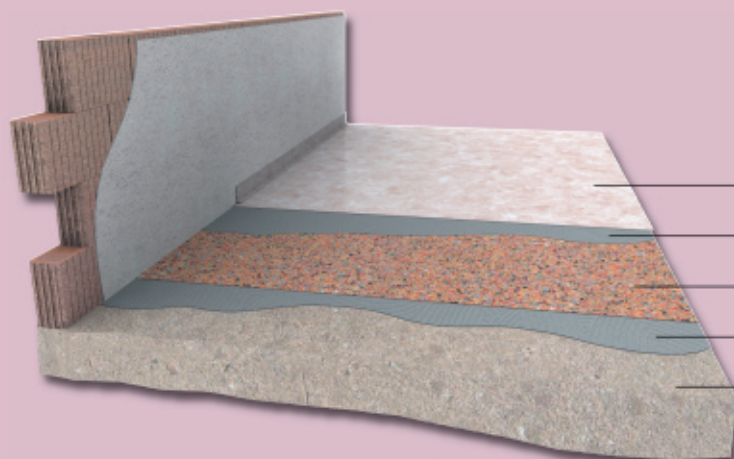
adhesive

DAMTEC® standard

adhesive

subfloor (e.g. concrete)

3 DAMTEC® color



PVC / vinyl

adhesive

DAMTEC® color

adhesive

subfloor (e.g. concrete)

A DAMTEC® FOR VIBRATION INSULATION / VIBRATION ABSORPTION

e.g. ground vibrations · structure-born vibrations of machines · elevator motors · pumps · ventilation systems
tunnel/railway construction · etc.

For further information please contact:

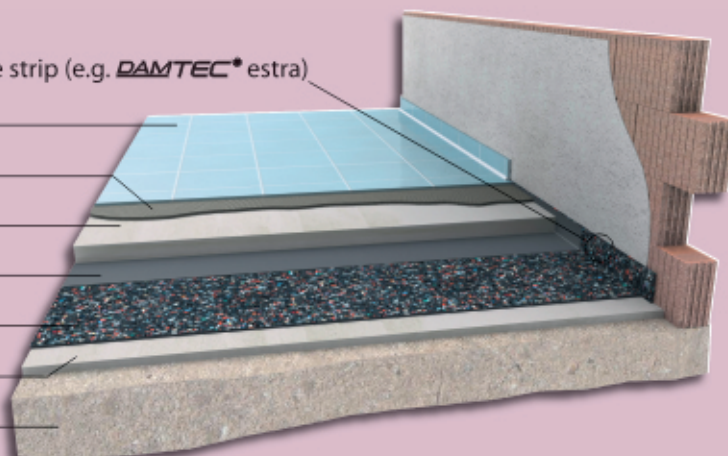
DAMTEC Australasia Pty Ltd · E-Mail: enquiries@damtec.com.au · Ph: 1800 DAMTEC (326832)

DAMTEC® UNDER SCREED / ON WOODEN SUBFLOORS

4 DAMTEC® *estra*

floor covering (e.g. tiles) _____
 adhesive _____
 screed/concrete slab (min. 35 mm thick at waste) _____
 PE membrane _____
 DAMTEC® *estra* _____
 levelling layer (where necessary) _____
 concrete subfloor _____

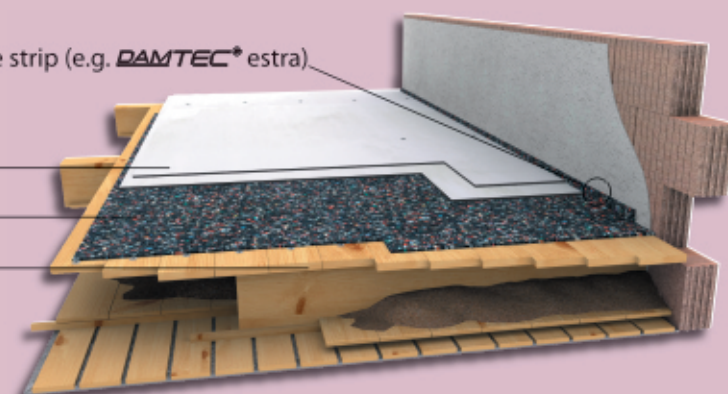
edge strip (e.g. DAMTEC® *estra*)



5 DAMTEC® *estra*

rigid floor element (e.g. cement sheet 2x) _____
 DAMTEC® *estra* _____
 wooden subfloor _____

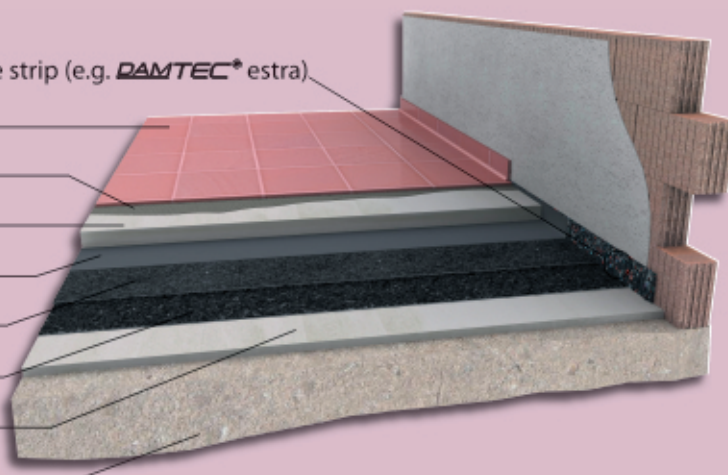
edge strip (e.g. DAMTEC® *estra*)



6 DAMTEC® *system*

floor covering (e.g. tiles) _____
 adhesive _____
 screed/concrete slab (min. 35 mm thick at waste) _____
 PE membrane _____
 DAMTEC® *system* _____
 DAMTEC® *system* _____
 levelling layer (where necessary) _____
 concrete subfloor _____

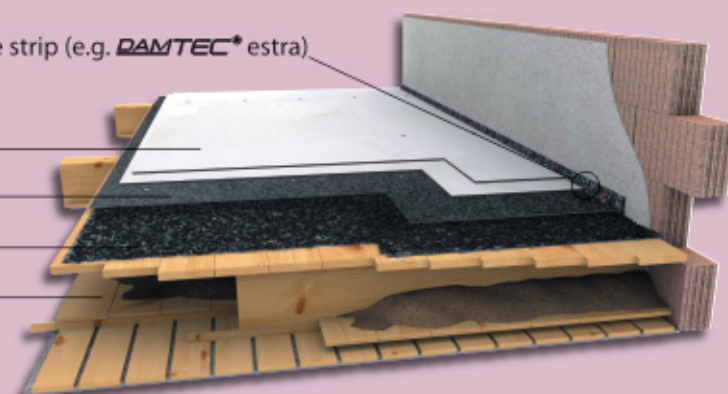
edge strip (e.g. DAMTEC® *estra*)

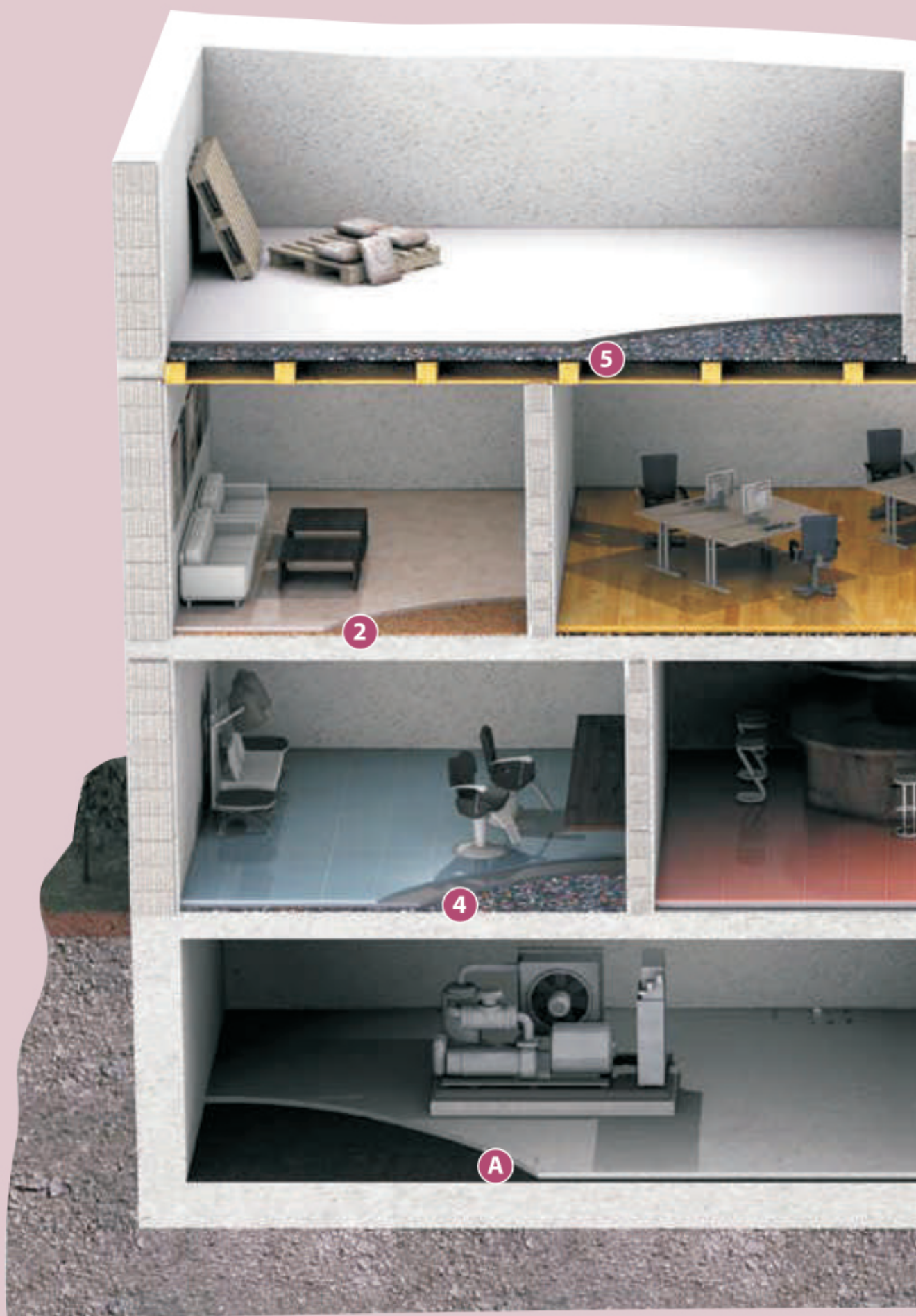


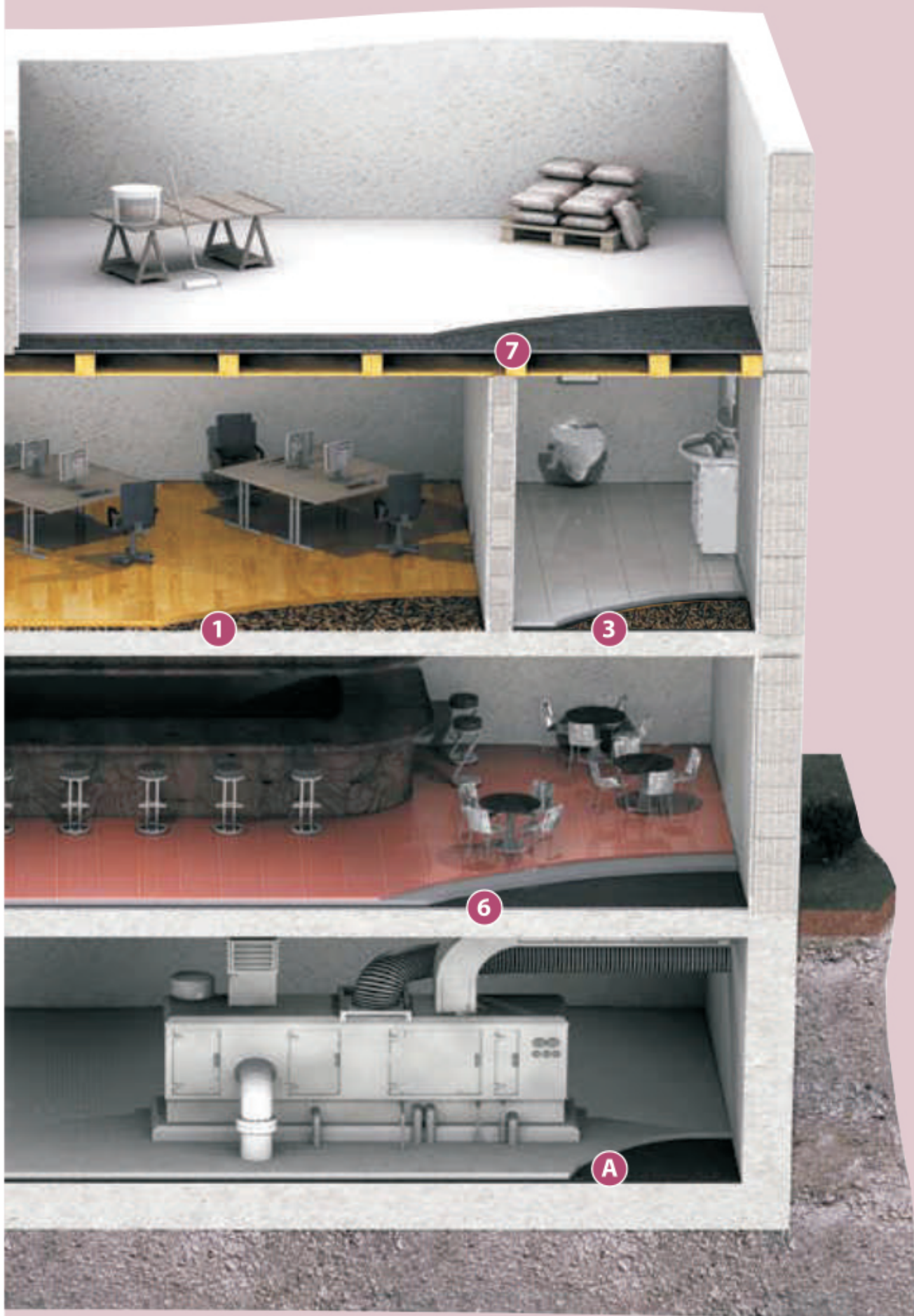
7 DAMTEC® *system*

rigid floor element (e.g. cement sheet 2x) _____
 DAMTEC® *system* _____
 DAMTEC® *system* _____
 wooden subfloor _____

edge strip (e.g. DAMTEC® *estra*)







DAMTEC[®]

AUSTRALASIA PTY LTD

PROVIDING YOU PEACE AND QUIET
acoustic underlay

DAMTEC[®]
AUSTRALASIA PTY LTD

DAMTEC Australasia

30 Chaffey street · THOMASTOWN VIC 3074

Ph: 1800 DAMTEC (326832) or Ph: 61 3 9462 7000

Fax: 61 3 9462 4661

E-Mail: enquiries@damtec.com.au

Internet: www.damtec.com.au

